

## Cloe Cummins

### BAppSc (Ex&SpSc), PhD

**Research specialisation:** Microtechnology devices (Global Positioning Systems with integrated accelerometer), team sport performance, load and fatigue monitoring, collision analysis and energetics.

**Experience:** Eight years' experience within high performance sport and the monitoring of elite athletes. Experience within rugby league includes implementation of sports science processes in rugby league teams (e.g. load and fatigue implementation tools and databases, daily wellness monitoring, quantification of training and match loads gleaned from microtechnology devices and session rate of perceived exertion); as well as a research assistant for the National Rugby League Research Board. Previous Research and Development sports scientist for Catapult (world leading sport micro-technology manufacturer).

**Research overview:** Focus upon improving team sport performance and reducing injury risk through novel applications of microtechnology to examine positional group differences; as well as to quantify training and match loads, collision forces and energetic demands.

#### Research publications:

Publications in journals (7), conference paper/ abstract (9).

Delaney J, Cummins C, Thornton R, Duthie G. Importance, reliability and usefulness of acceleration measures in team sports. *Journal of strength and conditioning research*; DOI: 10.1519/JSC.0000000000001849

Cummins C, Gray A, Shorter K, Halaki M & Orr R. Energetic demands of interchange and full-match rugby league players. *Journal of Strength and Conditioning Research*; DOI: 10.1519/JSC.0000000000001801

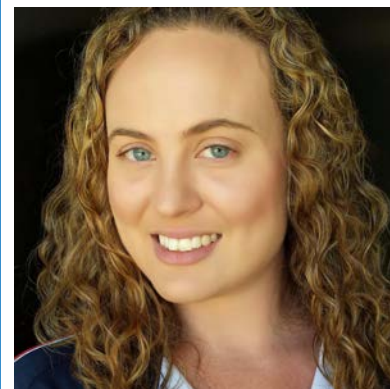
Cummins C, McLean B, Halaki M & Orr R. Positional differences in external on-field load during specific classifications across a professional rugby league pre-season. *International Journal of Sports Physiology and Performance*; DOI: 10.1123/ijsp.2015-0789, 2016.

Cummins C, Gray A, Shorter K, Halaki M & Orr R. Metabolic power and energetic costs of National Rugby League match-play. *International Journal of Sports Medicine*; 17(07): 552-558, 2016.

Cummins & Orr R. Analysis of physical collisions in elite National Rugby League match-play. *International Journal of Sports Physiology and performance*; 10(6): 732-739, 2015.

Cummins & Orr R. Collision characteristics of shoulder charge tackles in elite rugby league. *International Journal of Performance Analysis in Sport*; 15(3): 1090-1101, 2015.

Cummins C, Orr R, O'Connor H & West C. Global Positioning Systems (GPS) and microtechnology sensors in team sports: a systematic review. *Sports Medicine*; 43(10): 1025-1042, 2013.



**Cloe Cummins**

Lecturer Exercise and Sports Science,  
University of New England

**M: +61 422 286 952**

**E: [ccummin5@une.edu.au](mailto:ccummin5@une.edu.au)**

**Twitter: @cloecummins**