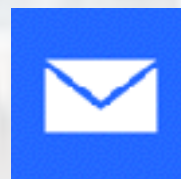


Sport Science and S&C Practices at the Western Bulldogs: a 2015 – 2017 Overview

PRESENTER	Sam Robertson
EVENT	SPRINZ Strength & Conditioning Conference
LOCATION & DATE	Auckland, 17th November, 2017



Robertson_SJ



sam.robertson@westernbulldogs.com.au

Overview

01

Western Bulldogs - VU Background

02

Our Research and Innovation philosophy

03

Doom and gloom...

04

Example applications

1

Independent review in 2012

2 x co-appointed staff and 2 x PhD

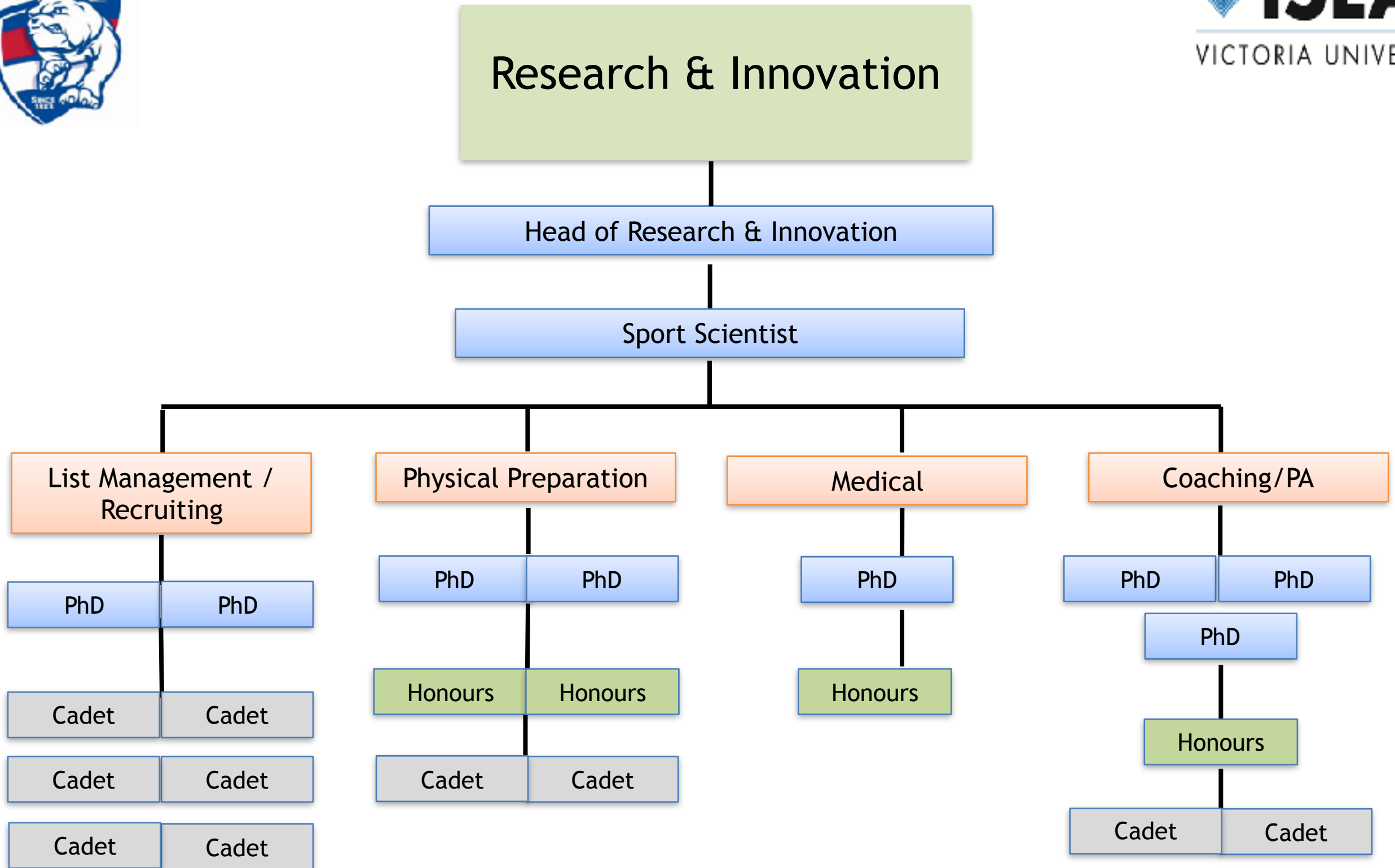
2

3

Sport Science formed part of HP

Increased breadth and depth

4



1

Independent review in 2012

2 x co-appointed staff and 2 x PhD

2

3

Sport Science formed part of HP

Increased breadth and depth

4

5

Innovation emphasis

LIVE & FREE



4TH	SYDNEY SWANS	67
00:03	WESTERN BULLDOGS	88





THE AUSTRALIAN

SILICON VALLEY IN SYDNEY FEB 2018

SingularityU Australia Summit

WHAT'S LEFT OF THIS YEAR?

THE WEEKEND AUSTRALIAN

DISA WITH WRITERS FROM BOTH SIDES

NEWS OPINION BUSINESS REVIEW NATIONAL AFFAIRS SPORT LIFE TECH ARTS TRAVEL HIGHER ED MEDIA PROPERTY

ASX 200: +0.34% 2514.20 | FTSE 100: +0.31% 678 | DAX 300: -0.17% 2100.30 | Nikkei 225: +0.57% 21149.38 | Hang Seng: +0.30% 1598.26

TECHNOLOGY

Western Bulldogs plan hackathon using team tracking data

The clubbing has proved... (text partially obscured)

SILICON VALLEY IN SYDNEY FEB 2018

SingularityU Australia Summit



Opinion

Peter Judd: Robots in the coaches box as AFL clubs adopt machine intelligence

Peter Judd, Geelong Advertiser
October 31, 2016 2:17pm

THERE'S a robot in the Western Bulldogs coaches box.

Not so much a Transformer, more a faceless machine intelligence that sucks in data and spits out insights only a PhD student could love.

This robot, let's call it Ruff, helped the Western Bulldogs win the AFL premiership.

ANTICIPATE and recommend the next best move, always playing the percentages, like Brad Pitt in Moneyball.

MEMBER Q&A: WHAT NOW FOR ASIA?

THE AUSTRALIAN

DISCUSS NORTH KOREA, CHINA AND MORE

NEWS OPINION BUSINESS REVIEW NATIONAL AFFAIRS SPORT LIFE TECH ARTS TRAVEL HIGHER ED MEDIA PROPERTY

PERSONAL TECHNOLOGY

Western Bulldogs gain from artificial intelligence

A Victoria University student uses game player data during a Dogs training session. Picture: Gordon Traynor

The Australian | 12:00AM October 6, 2016

CHRIS GRIFFITH
Technology Reporter Sydney | @chris_griffith



Winning Campaign

Our philosophy



SKEPTICISM

- Justification for approach
- Innovation is easy

“

Skepticism is not the same
as negativity

”

Why skepticism?



Measurement error

'I am improving Trait X in the athlete...
...therefore I am doing my job well'

'The athlete is not improving their speed...
...what have I missed?'

Our philosophy



SKEPTICISM

- Base position
- Does not equate to negativity



QUALITY


- Connect to performance
- Layers of measurement





EE

What can be asserted without evidence can also be dismissed without evidence...



JJ

What should we be skeptical of?



Injury prediction



Injury prediction

01

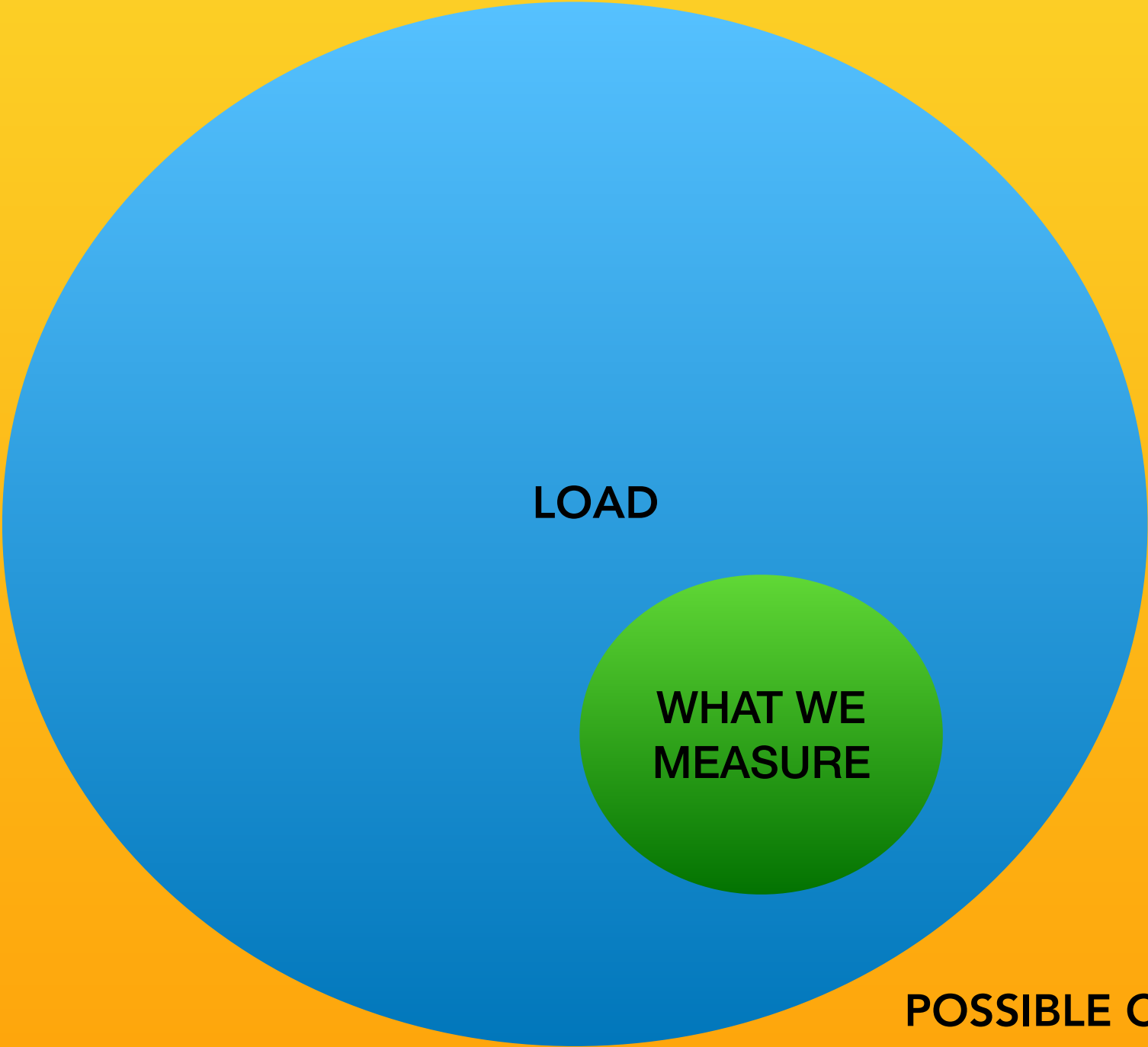
Data inputs of insufficient quality

02

Data inputs of insufficient quantity



Injury prediction



LOAD

WHAT WE
MEASURE

POSSIBLE CONTRIBUTORS
TO INJURY

Injury prediction

01

Data inputs of insufficient quality

02

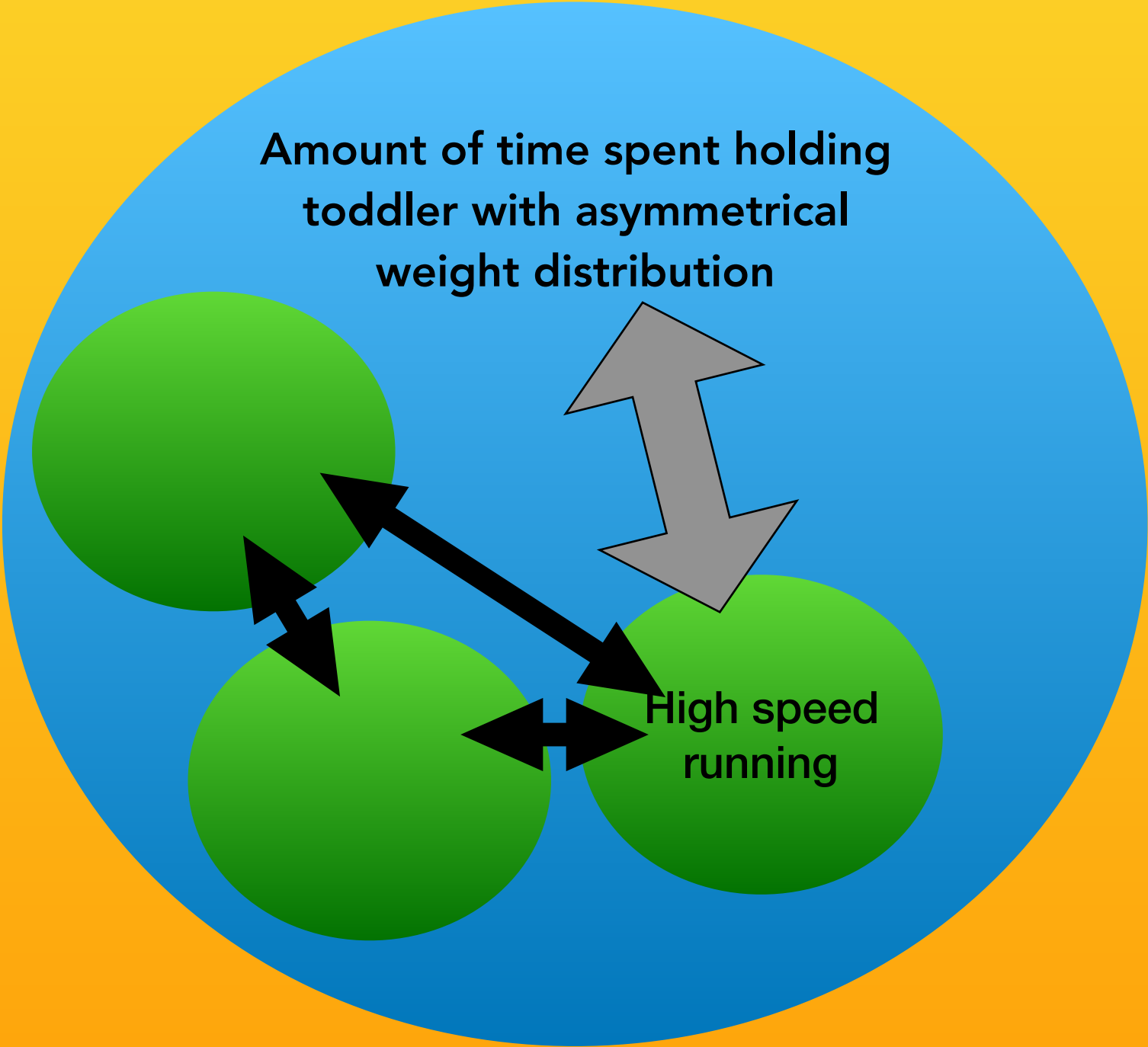
Data inputs of insufficient quantity

03

Linear analysis cannot provide insight to non-linear phenomena



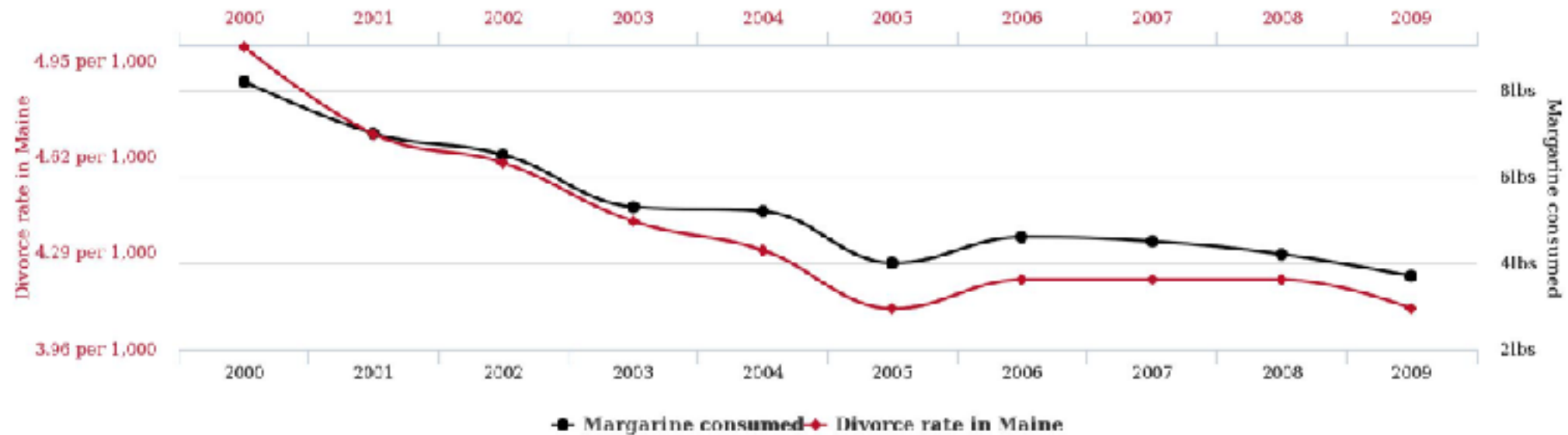
Non-linearity



Divorce rate in Maine

correlates with

Per capita consumption of margarine

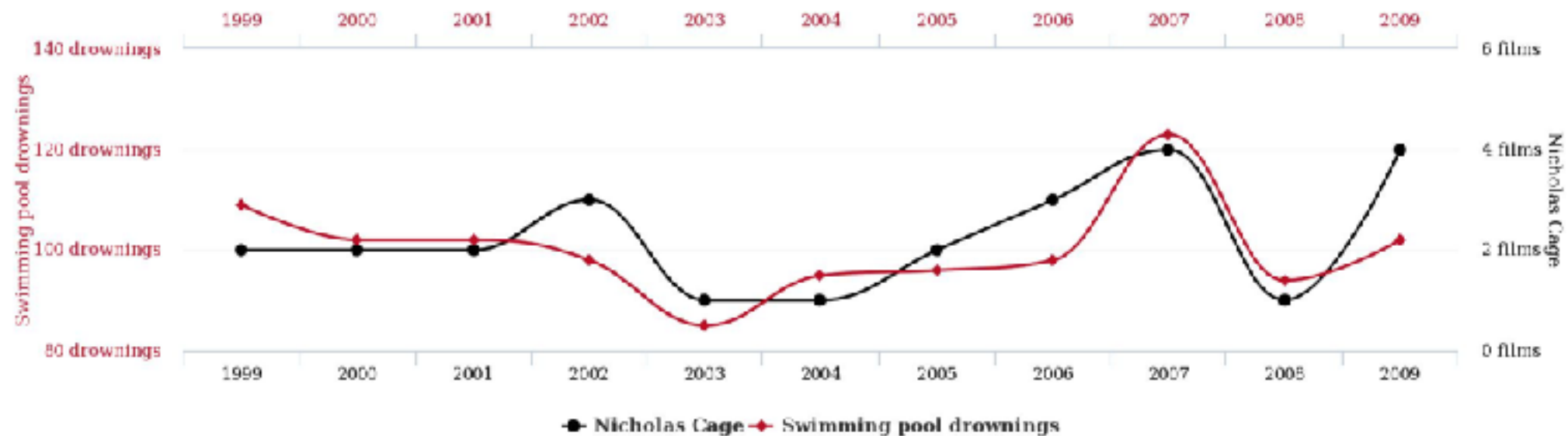


tylerriggs.com

Number of people who drowned by falling into a pool

correlates with

Films Nicolas Cage appeared in



tylerriggs.com

Injury prediction

01

Data inputs of insufficient quality

02

Data inputs of insufficient quantity

03

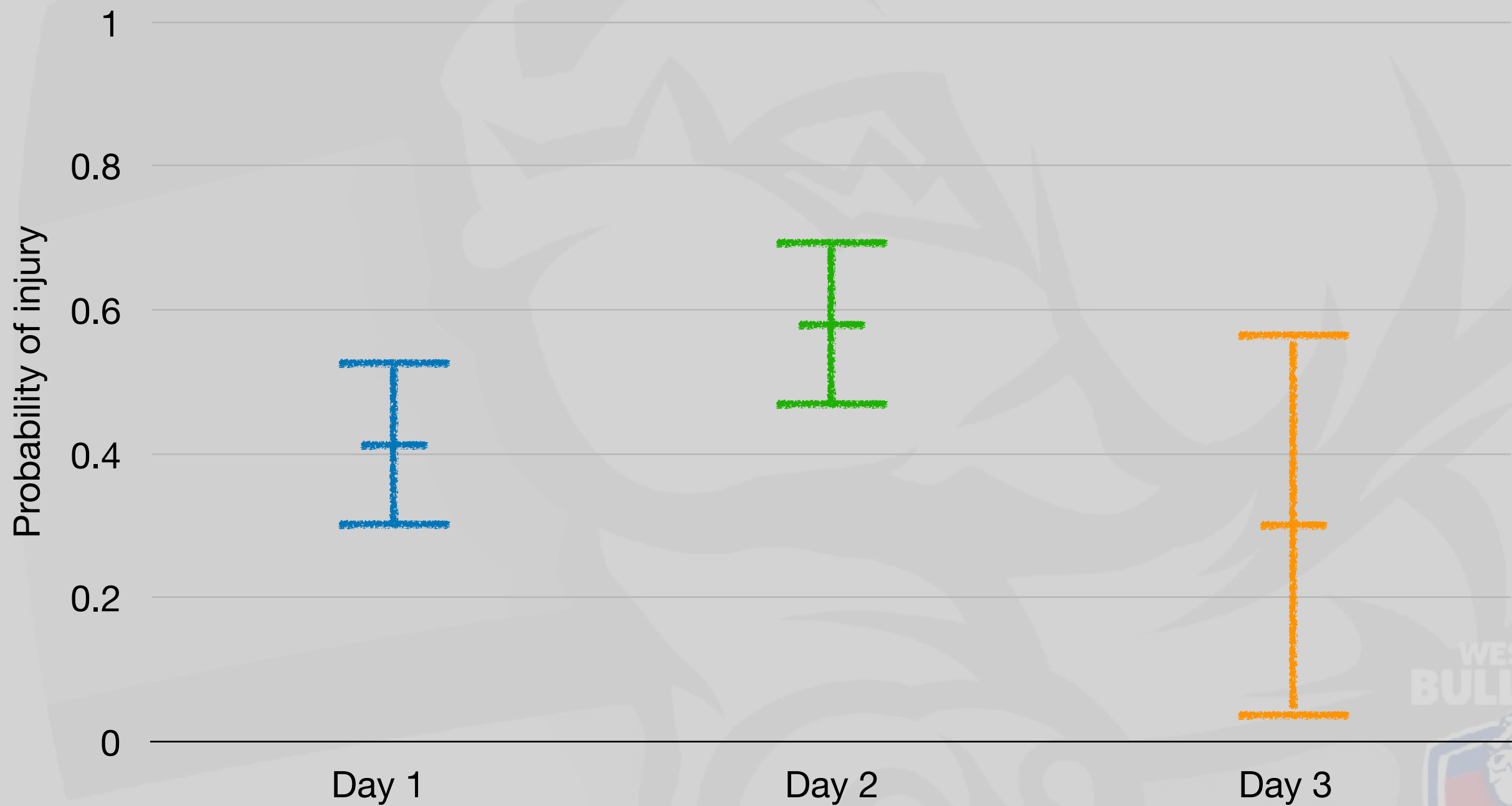
Linear analysis cannot provide insight to non-linear phenomena

04

How is the output operationalised?



Injury prediction



WESTERN
BULLDOGS



Injury prediction

1	2	3	4	5	6	7	8	9	10
11	12	13	14	X	16	17	X	19	20
21	22	23	24	25	26	27	28	29	30
31	32	33	34	35	36	37	38	39	X
41	42	X	44	45	46	47	48	49	50
51	52	53	54	X	56	X	58	59	X
61	62	63	64	65	66	67	68	69	70
71	72	73	74	75	76	77	78	79	80
81	82	X	84	85	86	87	88	89	90
91	92	93	94	95	96	X	98	99	100

WESTERN
BULLDOGS



Injury prediction

01

Data inputs of insufficient quality

02

Data inputs of insufficient quantity

03

Linear analysis cannot provide insight to non-linear phenomena

04

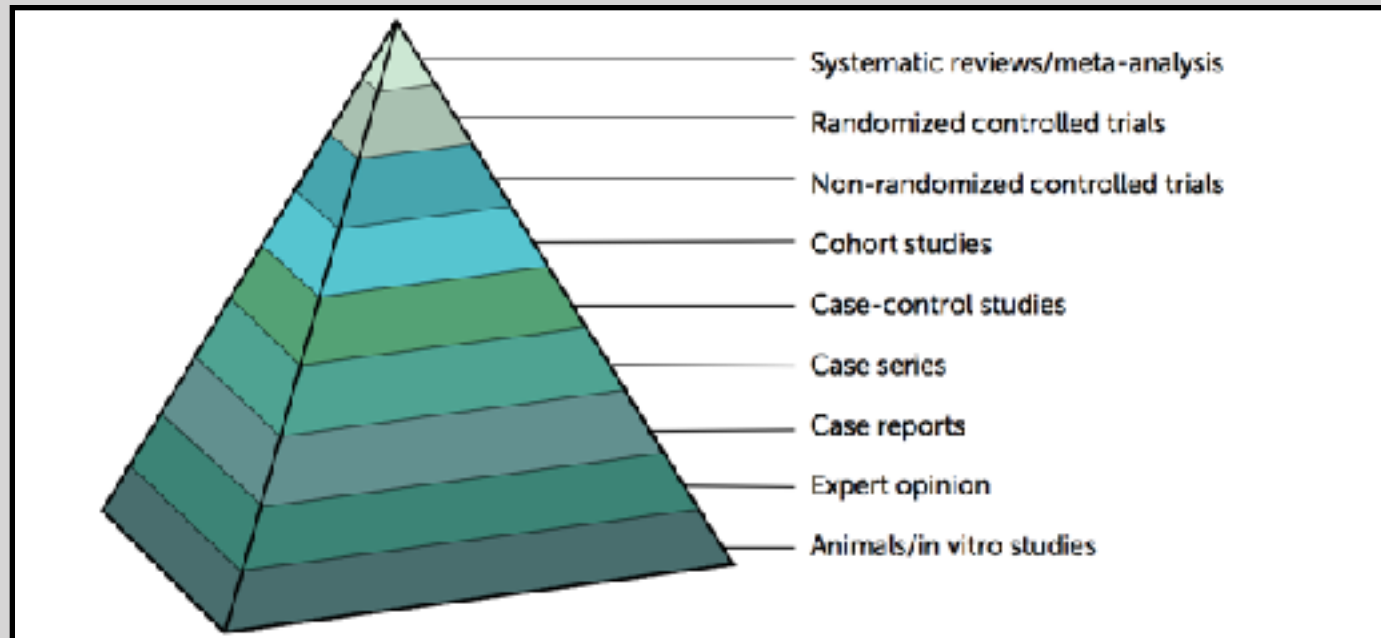
How is the output operationalised?

05

No ability to generate predictions in real-time



What to prioritise?



Structured Document from

JOURNAL OF CLINICAL EPIDEMIOLOGY

ELSEVIER
FREE Full-Text Article

J. Clin. Epidemiol. 2018, Jan; 88: 225–234.
doi: [10.1016/j.jclinepi.2015.06.025](https://doi.org/10.1016/j.jclinepi.2015.06.025) PMID: 29606796

ROBIS: A new tool to assess risk of bias in systematic reviews was developed

[Penne Whiting](#)^{a,c,*}, [Jelena Savovic](#)^{a,b}, [Julian P.T. Higgins](#)^{a,d}, [Deborah M. Cook](#)^e, [Ramona C. Reeves](#)^e, [Beverley Shea](#)^f, [Philippa Davies](#)^{a,b}, [Jos Kleijnen](#)^{a,g}, [Rachel Churchill](#)^a and ROBIS group

[Author information](#) [Article notes](#) [Copyright and License information](#)



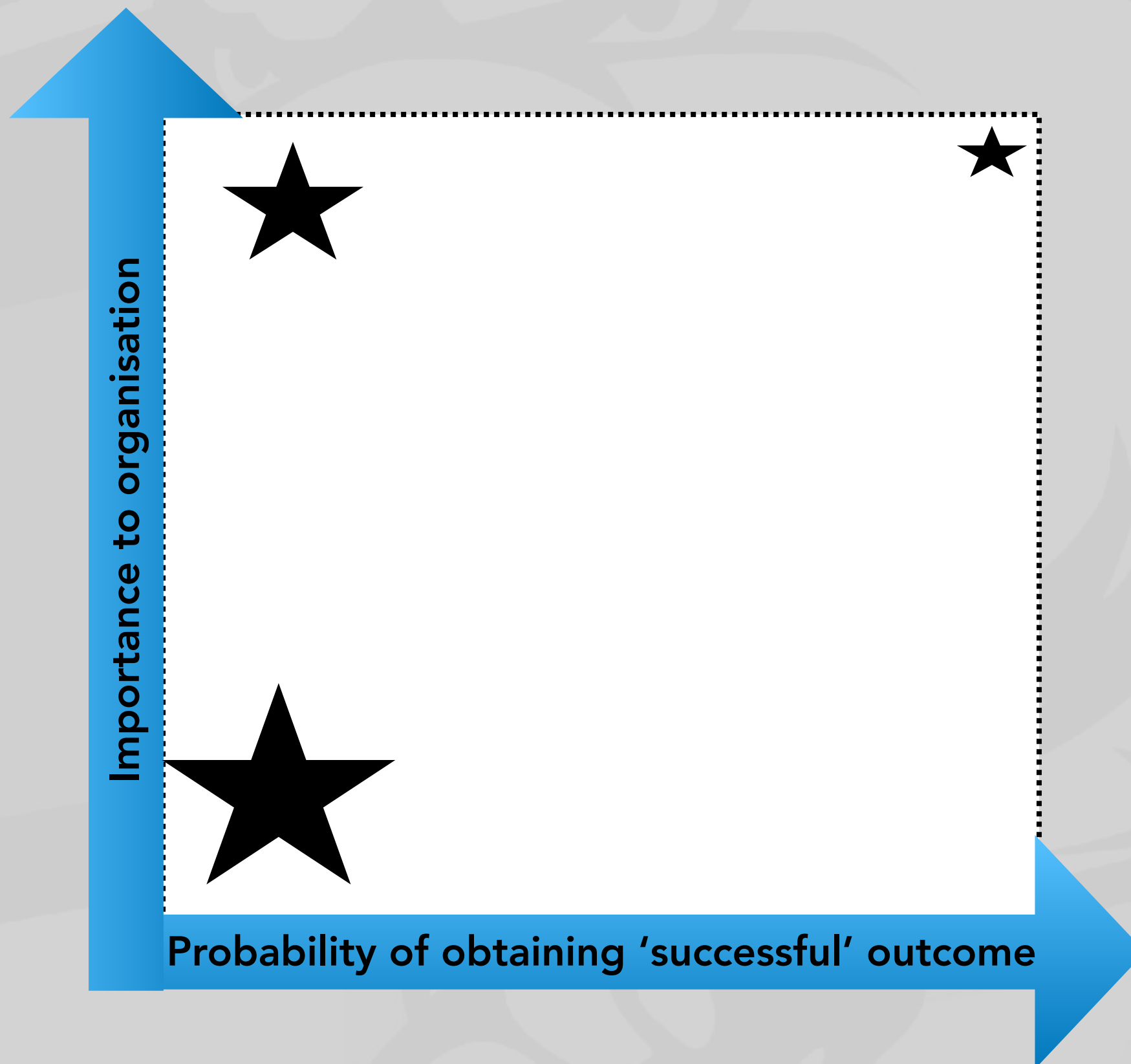
Essentially, all models are wrong, but some are useful.

(George E. P. Box)

Now for some good news...



What to prioritise?



Providing the evidence

Robertson *et al. Sports Medicine - Open* (2017) 3:2
DOI 10.1186/s40798-016-0071-y

Sports Medicine - Open

ORIGINAL RESEARCH ARTICLE

Open Access

Consensus on measurement properties and feasibility of performance tests for the exercise and sport sciences: a Delphi study



Sam Robertson^{1,2*}, Peter Kremer¹, Brad Aisbett³, Jacqueline Tran¹ and Ester Cerin^{3,4}

What is measurement quality?

RELIABILITY Stability Re-test reliability Intra-rater reliability Inter-rater reliability Internal consistency	VALIDITY Content Discriminant Convergent Concurrent Predictive
RESPONSIVENESS Responsiveness / sensitivity Minimum important difference / smallest worthwhile change Floor & ceiling effects	FEASIBILITY Interpretability Familiarity required Scoring complexity Completion complexity Cost Duration

A hypothetical...

'Trait X'

1

Content

- Are we capturing everything we need to?
- Inductive approach

2

Construct

- How well does this metric relate to competition outcome?
- Does it differentiate better athletes?

3

Concurrent






- Can we reduce data collection burden?
- Remove redundancies

Concurrent validity

	Total HIR	Distance	sRPE Load	Metres/Min	Duration	25 Kph +	%HIR/TD
Total HIR		0.95	0.82	0.74	0.68	0.53	0.93
Distance	0.95		0.90	0.73	0.78	0.59	0.88
sRPE Load	0.82	0.90		0.48	0.93	0.59	0.70
Metres/Min	0.74	0.73	0.48		0.30	0.25	0.78
Duration	0.68	0.78	0.93	0.48		0.56	0.58
25 Kph +	0.53	0.59	0.59	0.25	0.56		0.35
%HIR/TD	0.93	0.88	0.70	0.78	0.58	0.35	

A hypothetical...

'Trait X'

1	Content	<ul style="list-style-type: none">● Are we capturing everything we need to?● Inductive approach	
2	Construct	<ul style="list-style-type: none">● How well does this metric relate to competition outcome?● Does it differentiate better athletes?	
3	Concurrent	<ul style="list-style-type: none">● Can we reduce data collection burden?● Remove redundancies	
4	Predictive	<ul style="list-style-type: none">● Diagnostic● Performance	
5	Responsiveness	<ul style="list-style-type: none">● How changeable is the metric?● Can we detect 'meaningful' variations and trends?	

Measurement quality?



Our philosophy



SKEPTICISM

- Base position
- Does not equate to negativity



QUALITY

- Connect to performance
- Layers of measurement



DYNAMICITY

- Understand and expect non-linearity
- Embrace fuzziness

Interaction of contextual variables



Individual

- Skill level
- Physiology
- Current fatigue levels

Task

- Time prior to execution
- Pressure
- Target density

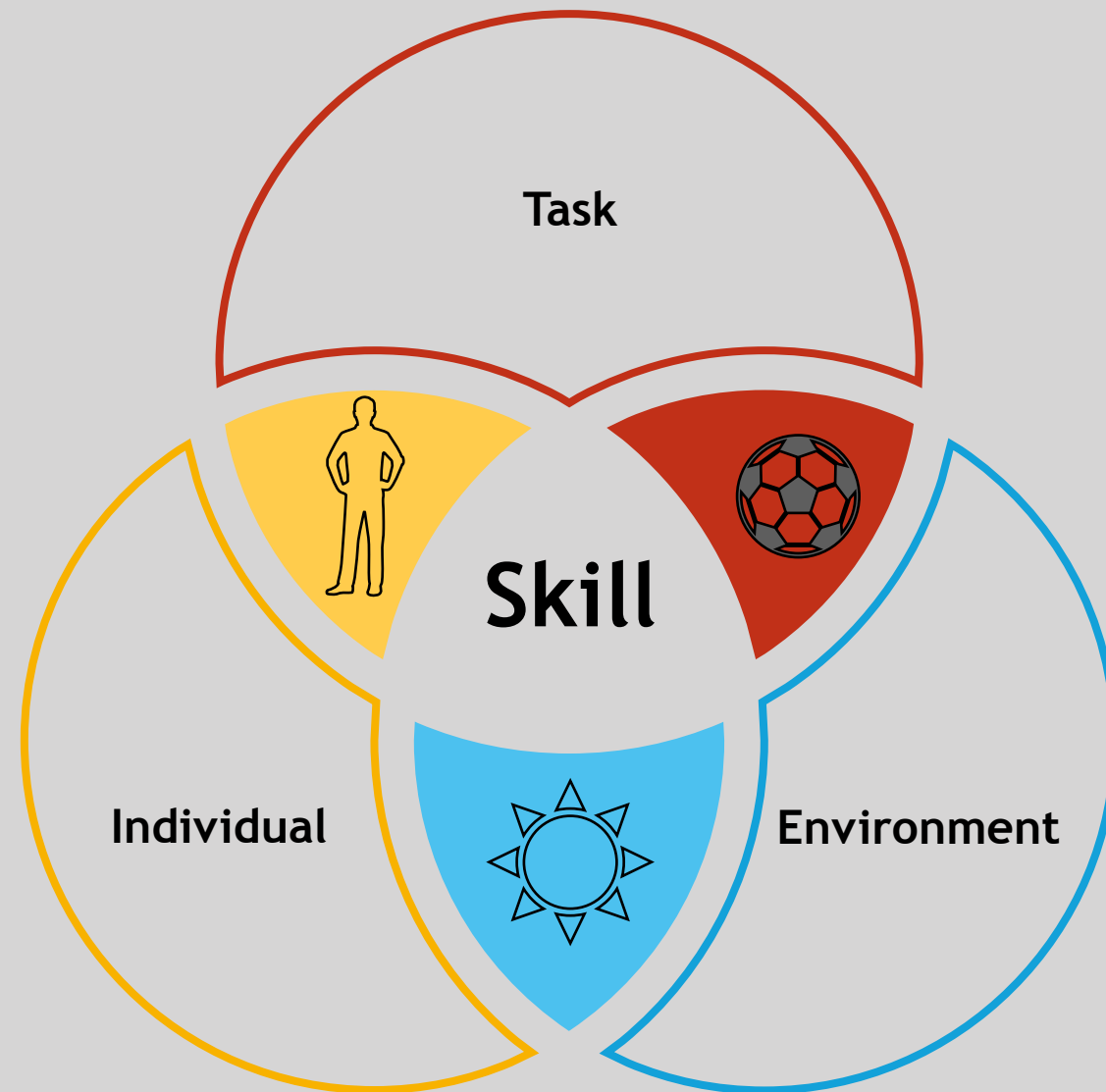


Skill

- Skilled behaviour (event)
- Coaching instruction
- Game plan

Environment

- Field location
- Wind
- Noise

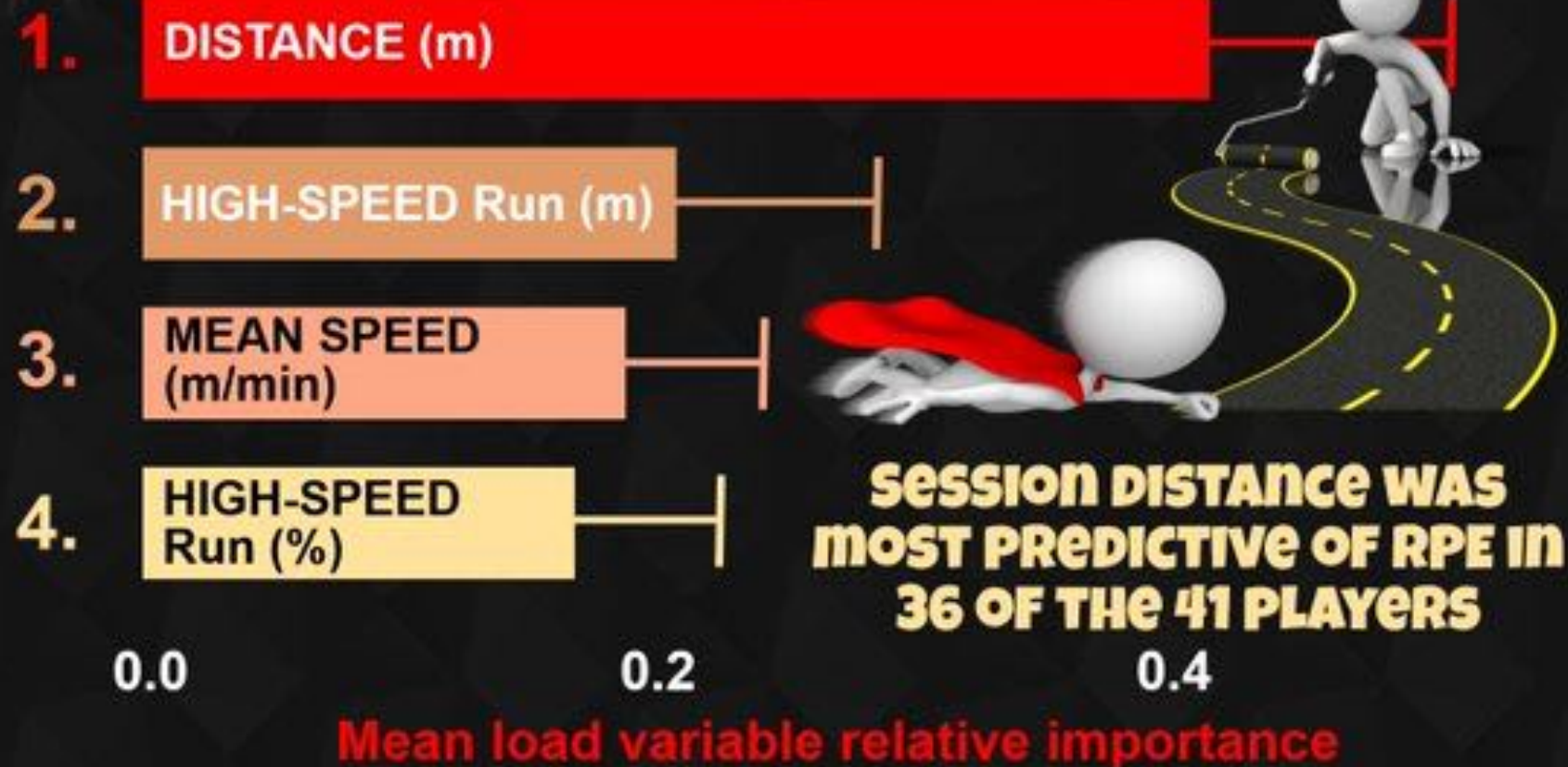


Concurrent validity

IMPORTANCE OF LOAD VARIABLES TO SESSION RPE PREDICTION IN TEAM SPORTS



Training load data for 41 professional Australian Football players was obtained over a period of 27 weeks. Individualised artificial neural network analyses were conducted to determine the ability to predict RPE from GPS variables on an individual basis

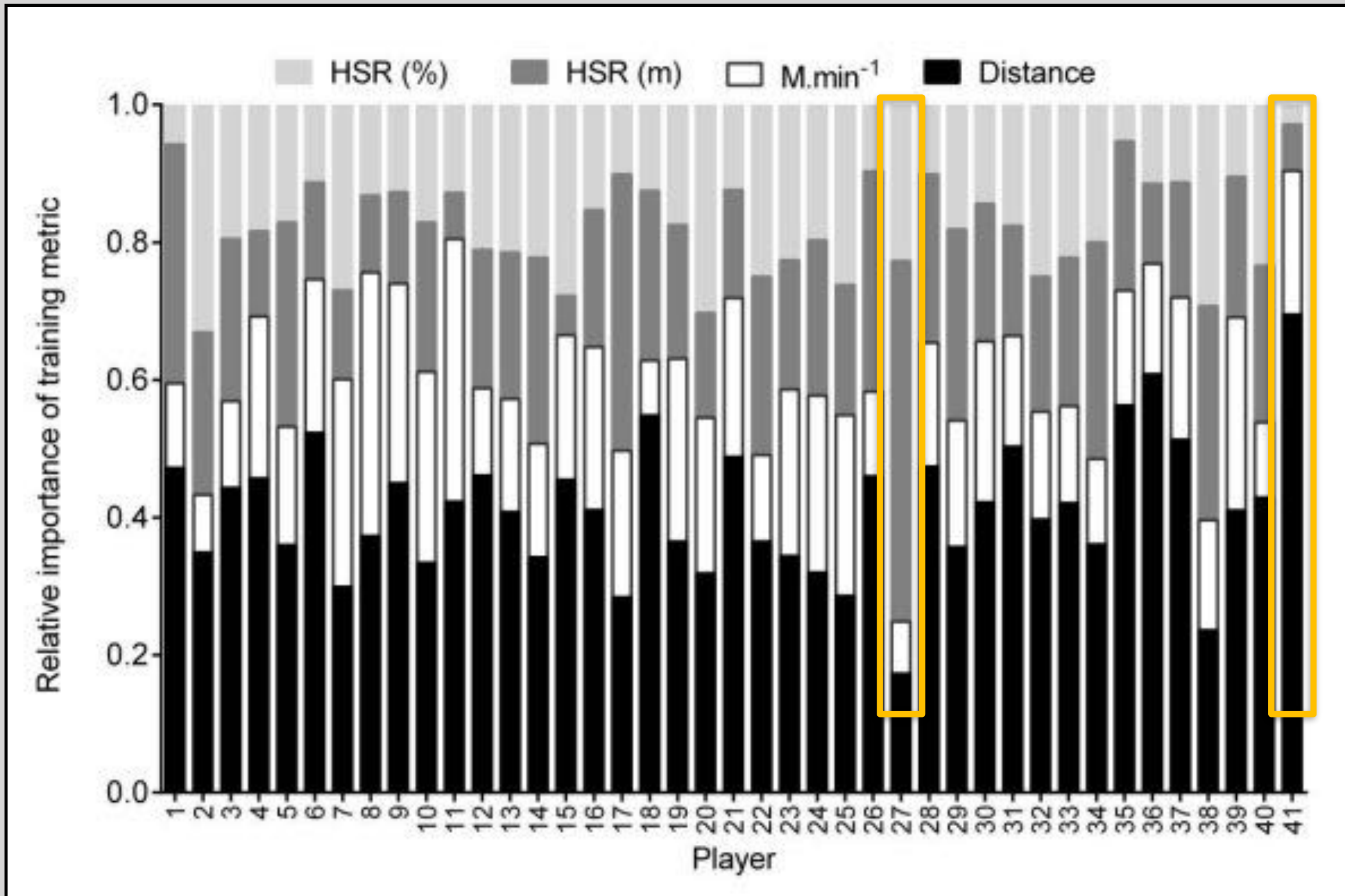


Reference: by Bartlett, O'Connor, Pitchford, Torres-Ronda & Robertson, IJSP, May 2016

Designed by @YLMSportScience

Concurrent validity

Rule-based monitoring



Our philosophy



SKEPTICISM

- Base position
- Does not equate to negativity



QUALITY

- Connect to performance
- Layers of measurement



DYNAMICITY

- Understand and expect non-linearity
- Embrace fuzziness



TRANSLATIONAL

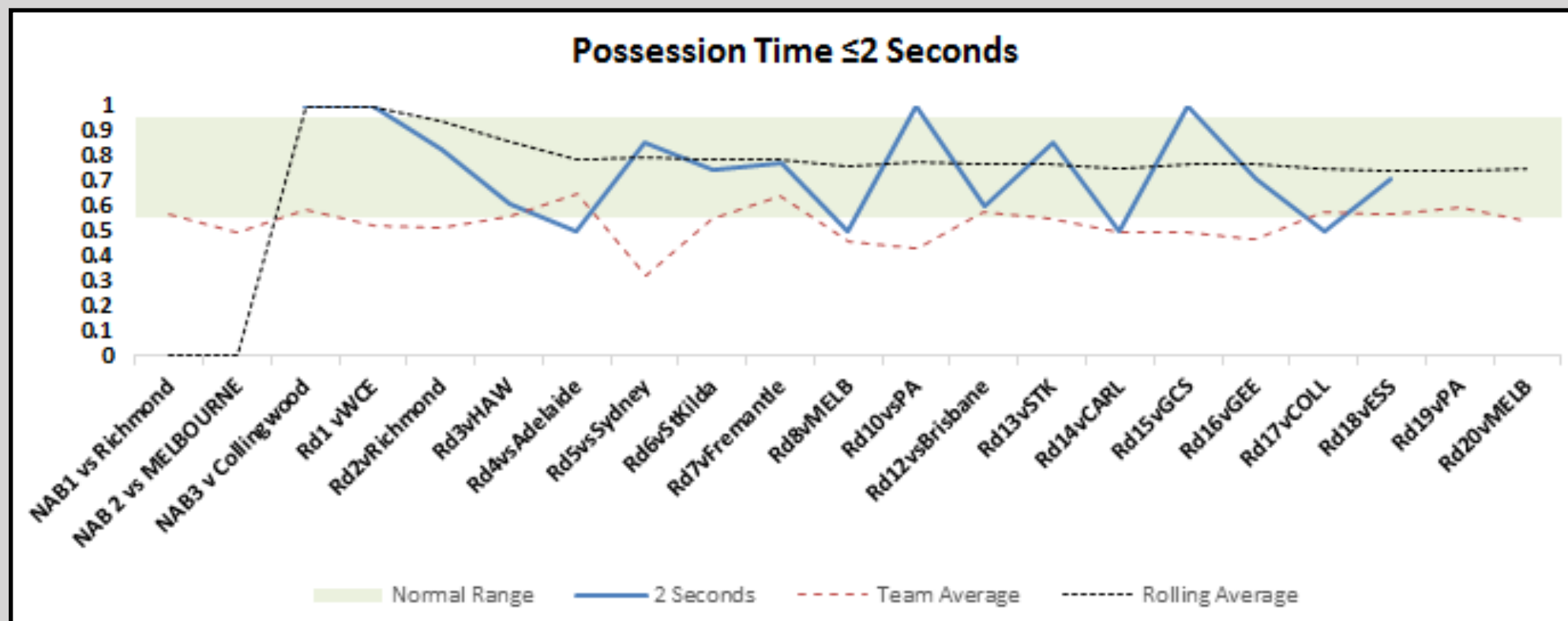
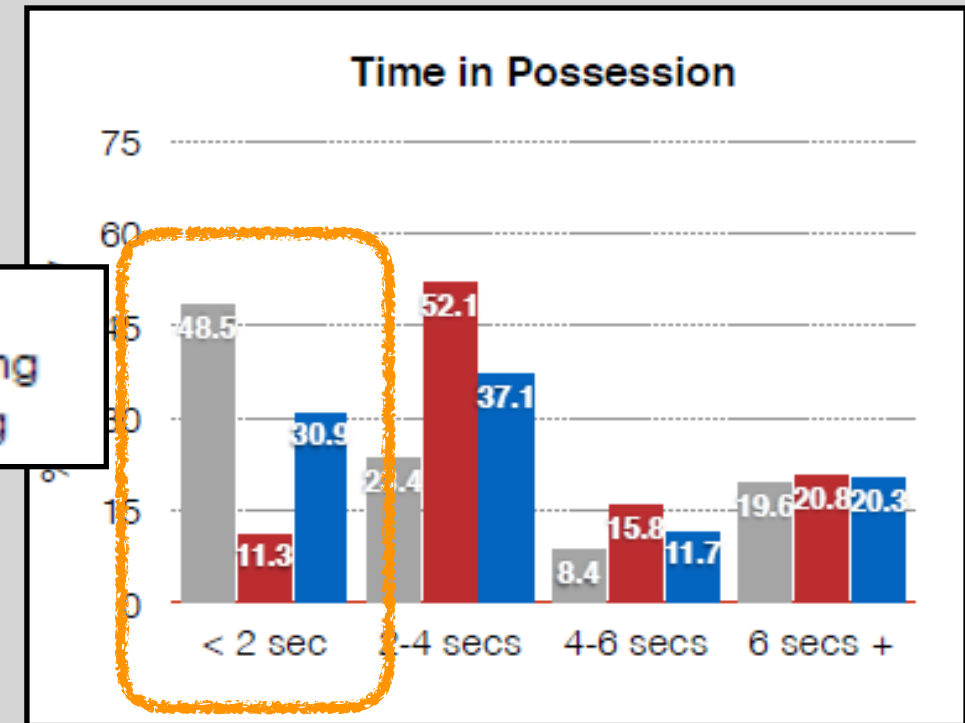
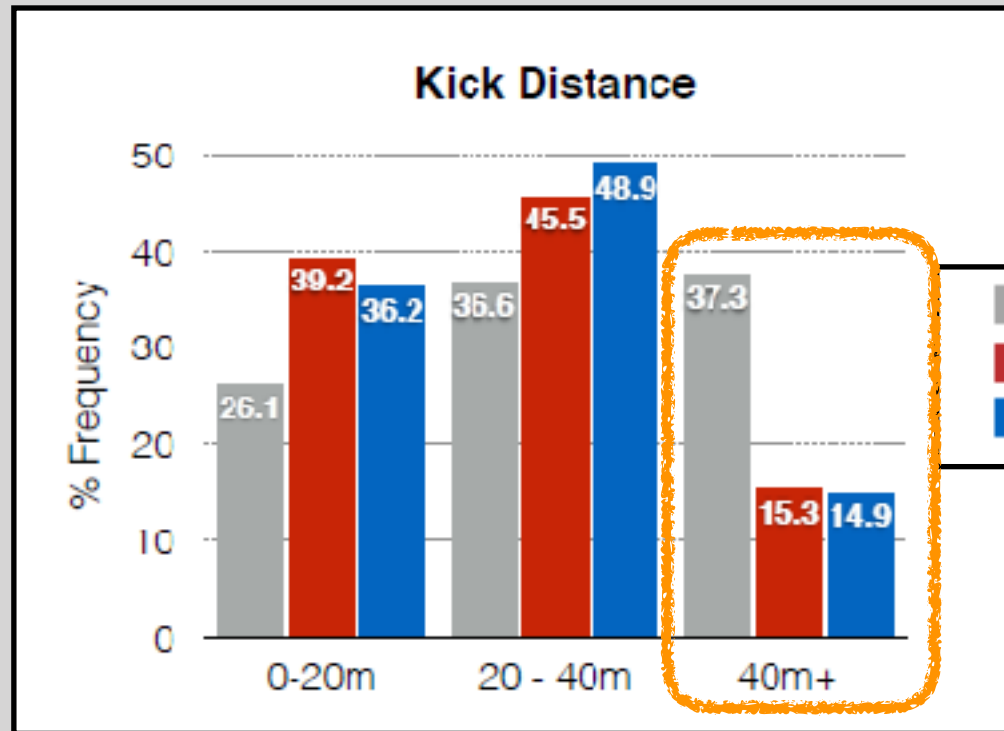
- Research that addresses applied sport questions





Training design

Representative Design




Training design

Representative
Design



SCIENCE AND MEDICINE IN FOOTBALL, 2017
<https://doi.org/10.1080/24733938.2017.1381344>

 **Routledge**
Taylor & Francis Group

ARTICLE

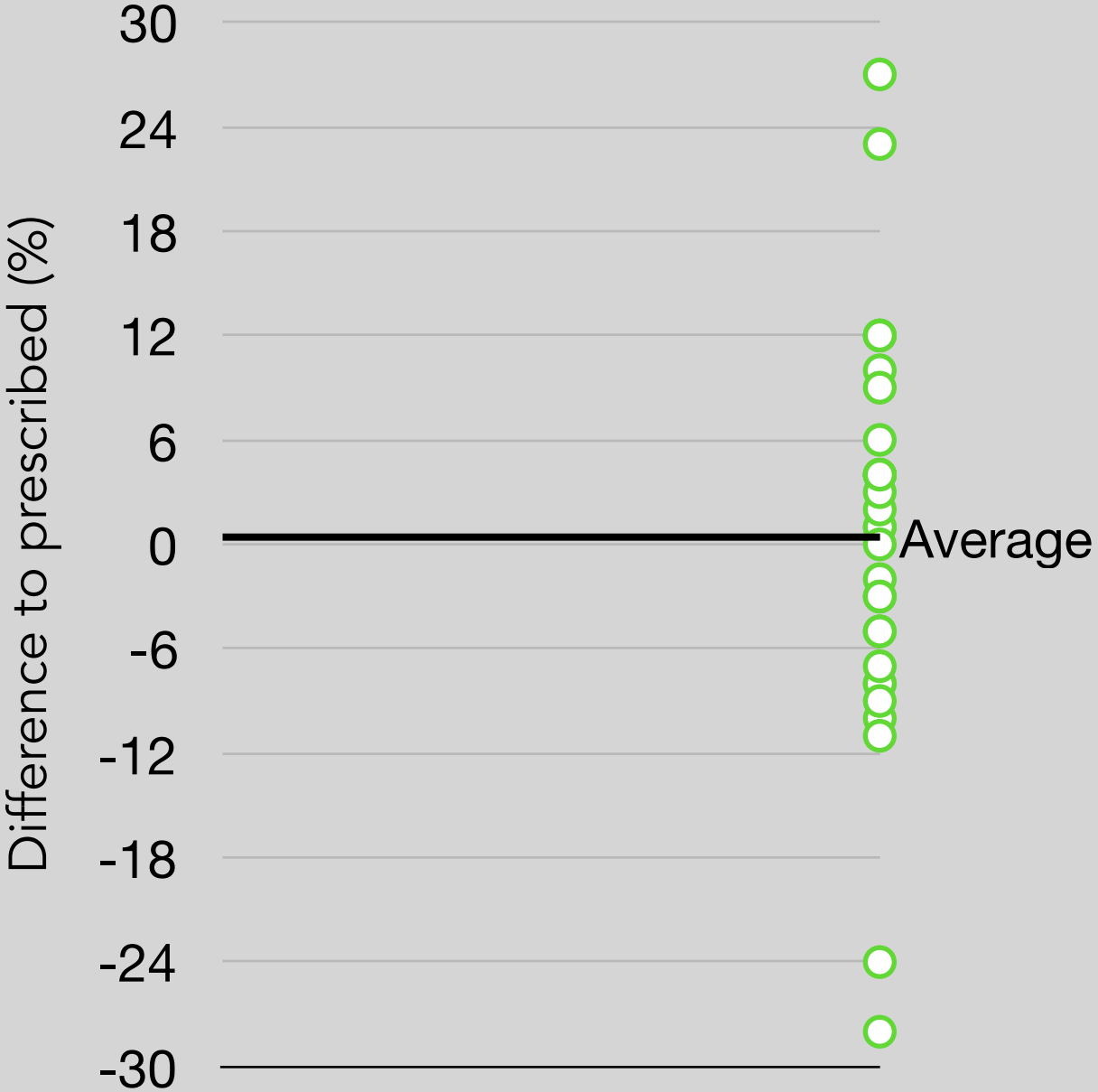
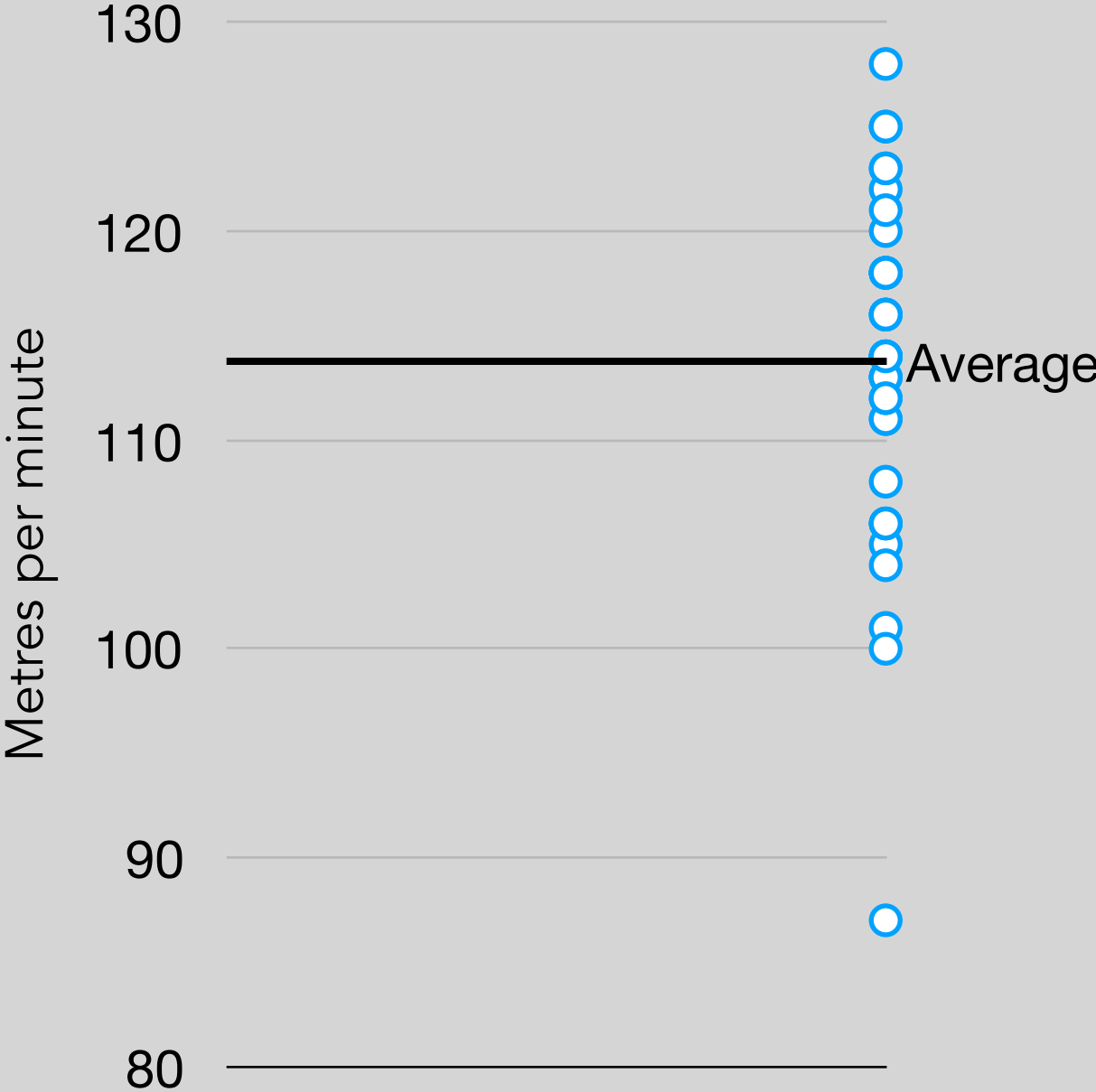
 Check for updates

Development of physical and skill training drill prescription systems for elite Australian Rules football

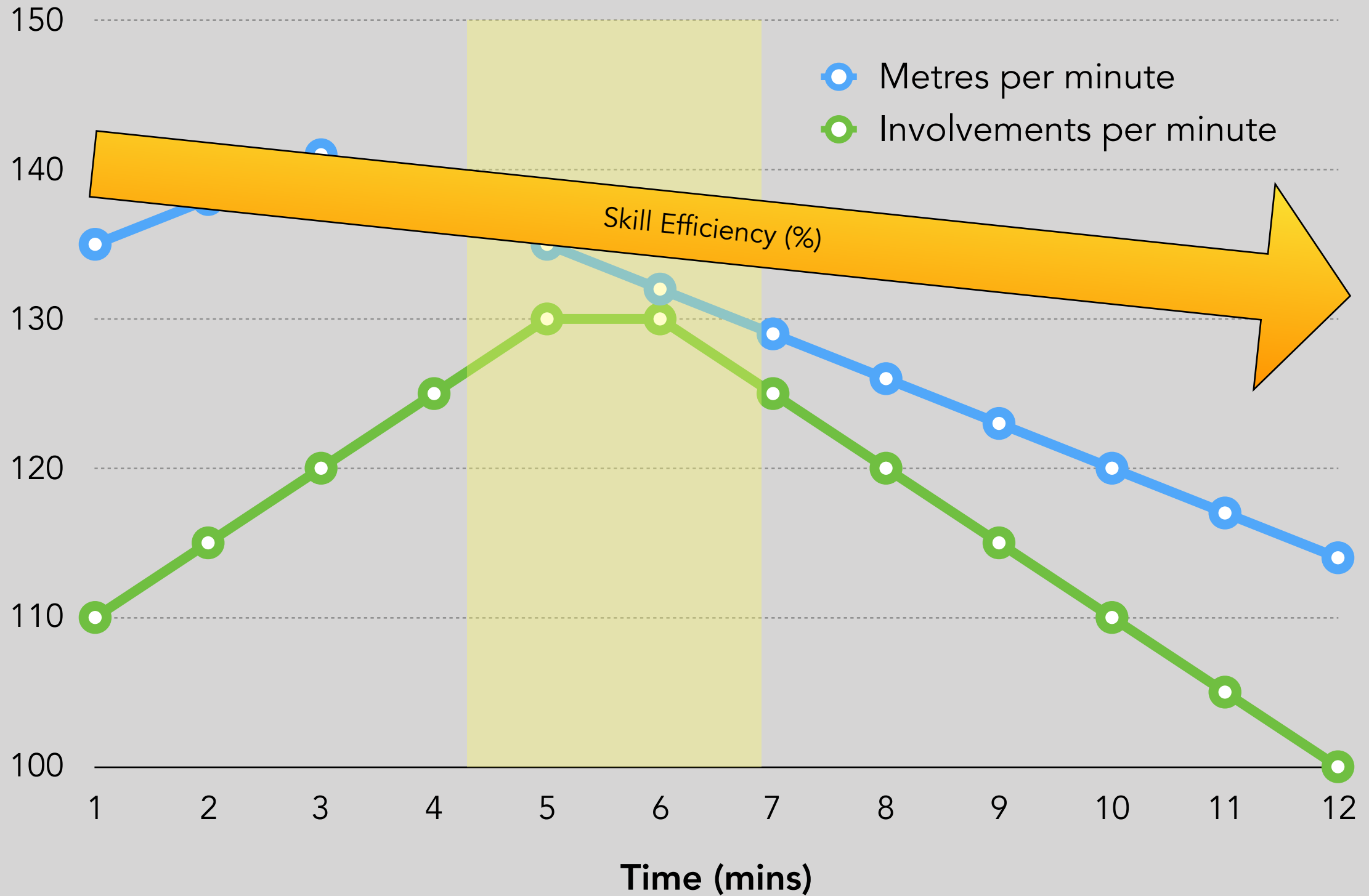
David M. Corbett^{a,b}, Jonathan D. Bartlett ^{a,b}, Fergus O'Connor^{a,b}, Nicole Back^a, Lorena Torres-Ronda^{a,c}
and Sam Robertson ^{a,b}

^aInstitute of Sport, Exercise & Active Living (ISEAL), Victoria University, Footscray, Australia; ^bWestern Bulldogs Football Club, Footscray, Australia;
^cDepartment of Health and Kinesiology, Exercise and Sport Nutrition Lab, Texas A&M University, College Station, TX, USA

Drill Wizard



Challenge Point



Strategic periodisation

JOURNAL OF SPORTS SCIENCES, 2018
VOL. 36, NO. 3, 279–285
<https://doi.org/10.1080/02640414.2017.1300315>

 **Routledge**
Taylor & Francis Group



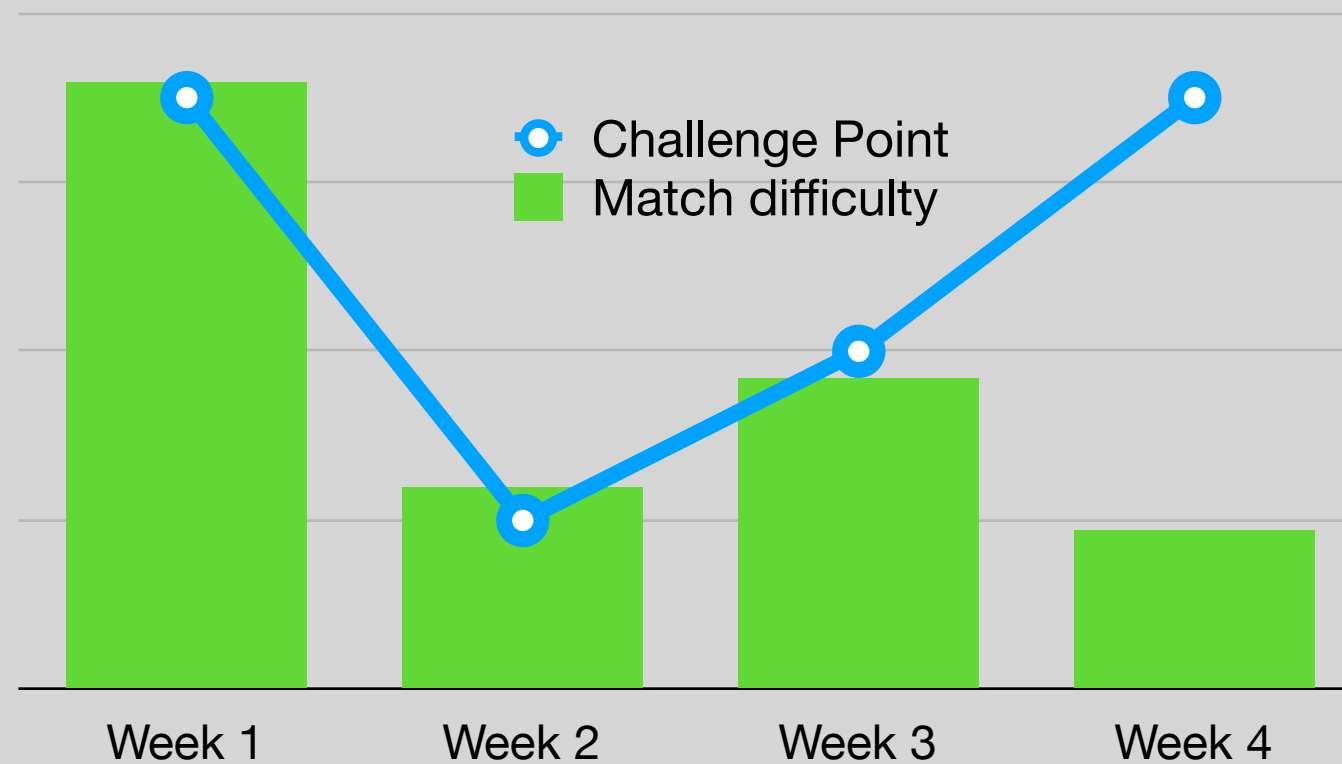
Evaluating strategic periodisation in team sport

Sam Robertson ^{a,b} and David Joyce^c

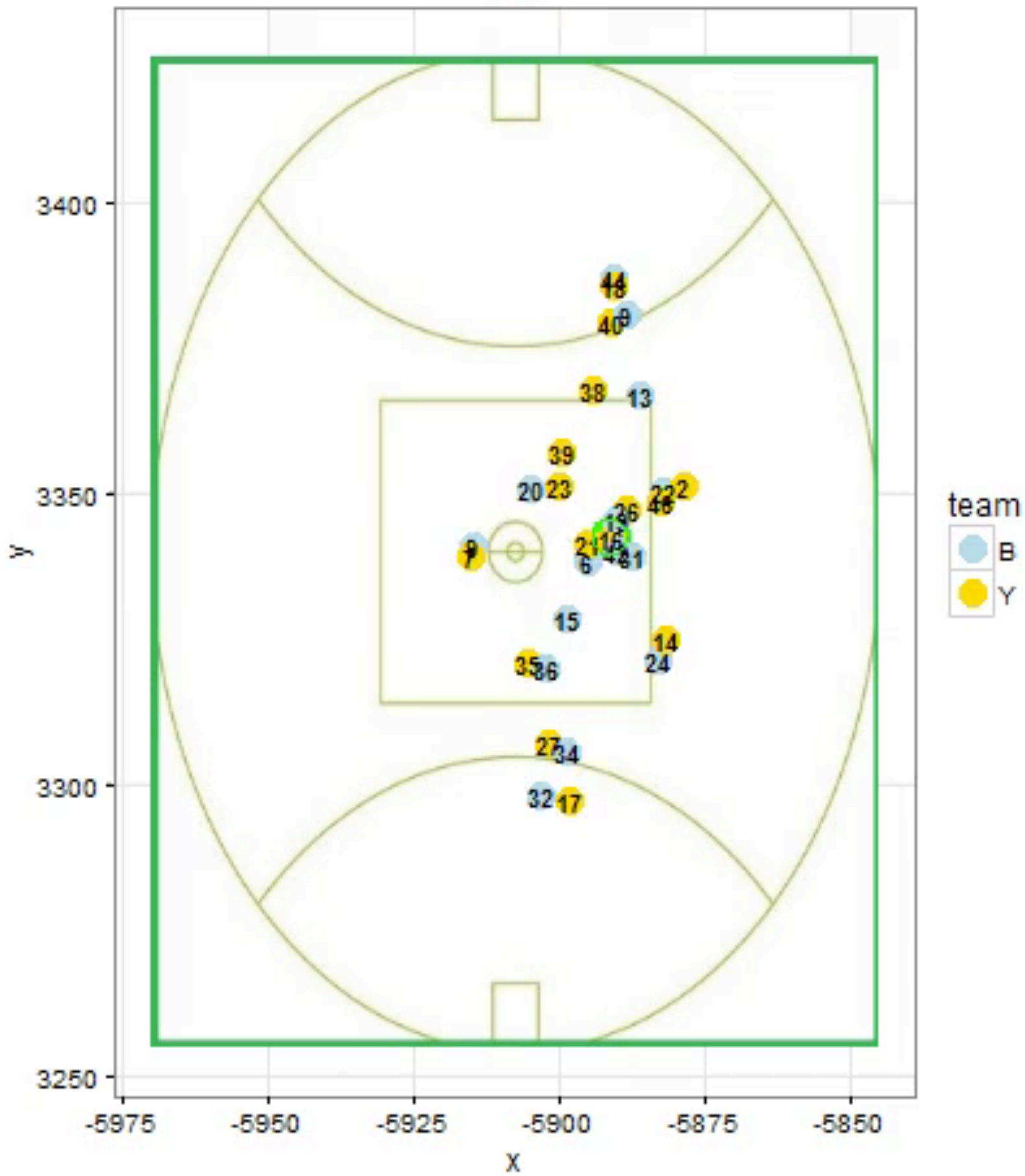
^aInstitute of Sport, Exercise & Active Living, Victoria University (ISEAL), Footscray, Australia; ^bWestern Bulldogs Football Club, Footscray, Australia;
^cGreater Western Sydney Football Club, Sydney Olympic Park, Australia

Strategic periodisation

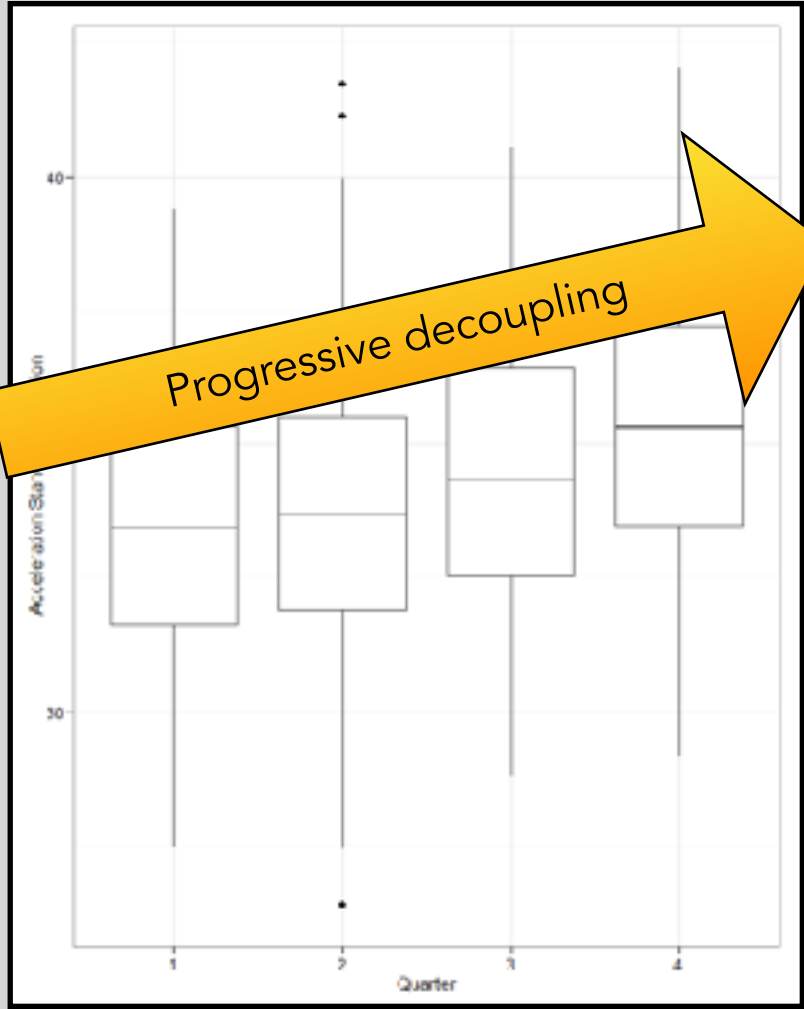
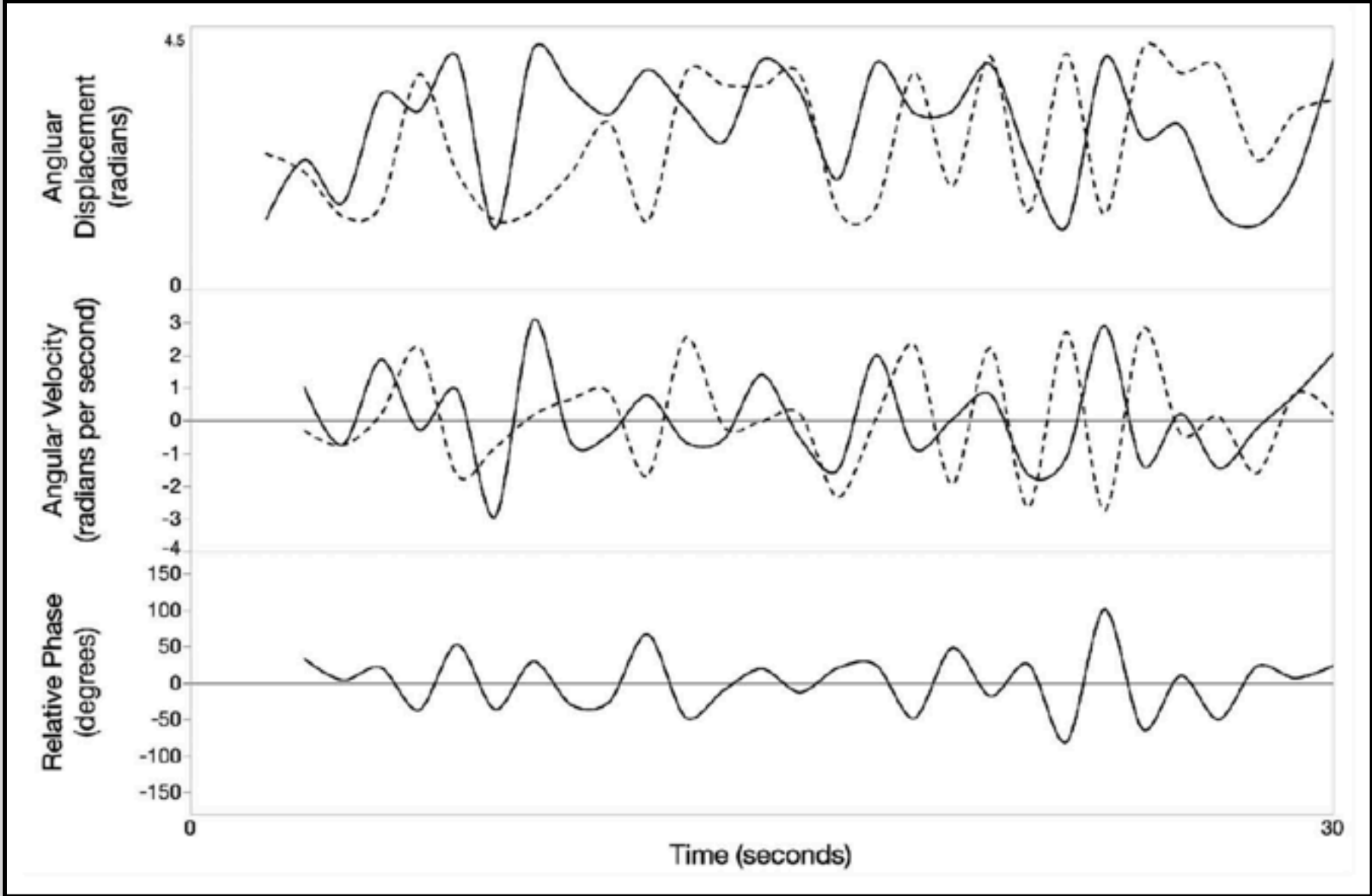
	Rank 2012	Rank Current	Location	MDI	Result
Brumbies	7	1	Away	7.2	-29
Cheetahs	10	13	Home	2.4	-1
Blues	12	4	Home	3.7	3
Force	14	12	Home	1.9	4
Hurricanes	8	7	Away	6.5	-12
Chiefs	2	2	Home	6.6	5



16.6



Player coupling - by time



Summary

01

Be skeptical

02

Keep an open mind...but not so open that your brain falls out

03

Embrace non-linearity

04

Be comfortable with uncertainty

Sport Science and S&C Practices at the Western Bulldogs: a 2015 – 2017 Overview

Thank you



Robertson_SJ



sam.robertson@westernbulldogs.com.au

